



Company Profile





Contents Page

1. Introduction	3
2. Vision	4
3. Mission Statement	4
4. Philosophy	4
5. Establishment	5
6. Services provided	5-6
7. Company Ownership	6
8. Company Organogram	7
9. Director's Information	7
10. Company Experience	8
11 Completed Projects' List	9
12. Directors	10
13. Company Registration Number	10
14. Office (S)	10
15. Contact Details	10
16. Completed Projects (Pictures)	11-14
17. Outreach Project	15-17



1. INTRODUCTION

Mayibuye Consulting and Projects Pty (Ltd) was registered in 2012 by young black South Africans who hold a success record in Project Management, Civil and Structural Engineering, Principal Agency, Mentorship, Supervision and Construction Management.

Mayibuye is a Nguni word which when loosely translated means, “bring back what was lost, let it return or may it come back.” It’s a literal call for restoration and retrieval, claiming of power, culture and most importantly equal opportunities for all. It’s a call for the African child to stand up and claim his place in the economical spectrum which is laden with opportunities for him who is willing to work hard..

We use the slogan to reaffirm the Government of our determination to add value in the construction and development industry in South Africa. And our mission revolves around our name.

We envision a service that maximizes profits and minimizes down time for our clients by utilizing appropriate and effective solutions in both technology and management skills.

We strive to be the preferred service provider not only in KwaZulu-Natal but across South Africa and into the African continent.

Mayibuye is a company that accommodates individuals who are willing to learn, as it is a place where we are proud to share knowledge and train staff so they excel and have necessary skills to help add value.



2. VISION

- To be the premier black engineering firm and the largest servicing both the public and private sector both effectively and efficiently.

3. MISSION

- To partner with implementing agents, public and private sector to address the infrastructural backlog; and fast track the development needed to accommodate flocking of people to cities.

4. PHILOSOPHY

Discipline

- We pride ourselves on being a company made up of individuals who can obey rules.
- We take needed action against those who disobey instructions as we work in a sensitive industry, in which a little disobedience could harm all the users of that infrastructure we construct.

Accountability

- We are accountable and responsible people at Mayibuye.
- We take extreme care to conduct our business in a manner that upholds our image. And in any case that we err, we are always humble enough to admit and rectify.

Reliability

- Based on our track record you can count on us to deliver what we claim to be able to deliver.
- Our work ethic, combined with a unified vision and dedicated team ensure that we deliver on time and up to the required standard.

Innovation

- We are not just dedicated to consulting, and providing services. We have a vision for new property development projects which will help service key areas. And also to keep updating the technology we use in our projects to ensure that we keep up to date with developments in our industry.



5. ESTABLISHMENT

- The company head office is in the heart of the Durban City, on Gardner Street in the Corporate Place Building. We are located on the fourth floor. However, we operate throughout the KwaZulu-Natal province.

6. SERVICES PROVIDED

Project management

- All projects have goals and criteria to meet and it is our job as project managers to ensure that both this is met. We do this by initiating, planning, executing, controlling and concluding projects managed so that the team can deliver the results.

Civil and Structural engineering

- While civil engineering turns its focus on design, construction and maintenance of the physical and naturally built environment; structural is more technical in the sense that its focuses on understanding and calculating the stability, strength and rigidity of built structures. We are well experienced and provided these services exceptionally.

Construction management

- Without this phenomenon we would have had a difficult time building our success record since the establishment of Mayibuye. Construction management plays a pivotal role in ensuring the successful completion of a project before construction commences. It takes care of the overall planning, coordination, and control of a project from beginning to completion. The objective is meeting client requirement and ensuring the project is functional and financial viable.



Principal agency

- Having completed numerous projects we have gained a reputation which enables us to be the principal agency on various projects we conduct. This enables us the authority to practice our unique style of leadership and fast-track the completion of projects.

Facility management

- As a fast growing black owned company, we envision a future in which we will be facility managers. In other words we are in the process of developing shopping Centres, complexes and duplexes amongst other property development ideas we have conceptualized. This will ensure that we have a steady stream of income and diversify investments so we can expand Mayibuye nationally and beyond South African borders.

Membership

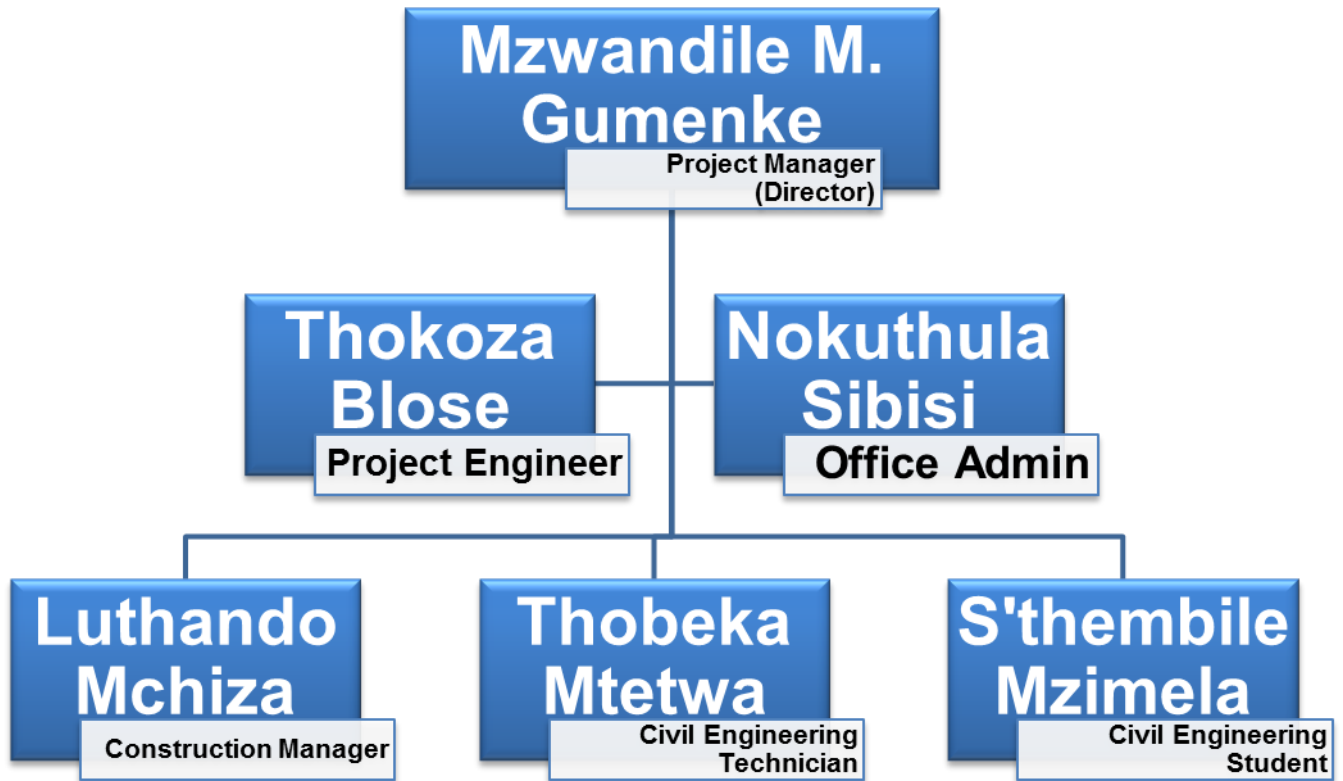
- Mayibuye Consulting and Project Pty (Ltd) is in the process to register with the Engineering Council South African and the Project Management body (SACPCPM).

7. COMPANY OWNERSHIP

- Mayibuye Consulting and Projects Pty (Ltd) is a 100% black owned and managed company. In the foreseeable future we are planning to sell shares with a special focus on previously disadvantaged women.



8. COMPANY ORGANOGRAM



9. DIRECTOR'S INFORMATION

Name	: Mzwandile M. Gumenke
Qualifications	: Engineering Technician : Concrete Technologist SCT 20 and SCT 30 : B-Tech in Structural Engineering (UNISA) : Member of PMSA : Member of SAICE
Expertise	: Construction Management : Project Management : Civil and Structural Engineering : Programme Management : Principal Agency : Supervision



10. COMPANY EXPERIENCE

- Construction of uThungulu Art Centre for the Department of Art and Culture in the Province of KwaZulu Natal. The total construction budget was R27, 000,000.00 Incl. VAT and the programme was implemented by Independent Development Trust 2014/15 year.
- Construction of water and Sanitation programme for twenty five (25) Schools under Amajuba and uMzinyathi Districts in the Province of KwaZulu Natal. The programme was funded by the Department of basic Education (DBE) with the total construction budget of R75, 000,000.00 Incl. VAT for 2013/14 year. The programme was implemented by Independent Development Trust.
- Road and storm water construction for different clients, Sun Success, Transnet and SBM Engineers with the following amounts, R2,589,818.23;R1,443,174.97 and R6,389,193.08 all INCL.VAT.
- Upgrade and construction of Old Cambrian Road in Dannhauser Industrial Park total programme is R20, 000,000.00 Incl.VAT for 2014/15 financial year.
- Immediate water supply for Ukhahlamba Local Municipality (Bergville Water Scheme) R2, 712, 060.00 Incl. VAT for 2014/15 financial year.
- Drought relief programme in Mnambithi, Ndaka and uKhahlamba Local Municipalities with the total amount of R8, 842, 449.48 Incl. VAT for 2015/16 financial year.
- Drought relief programme in Mnambithi, Ndaka and uKhahlamba Local Municipalities with the total amount of R7, 410, 000.00 Incl. VAT for 2015/16 financial year.
- Dredging of Oliphantskop Dam in Alfred Duma Local Municipality with the total amount of R33, 119, 304.62 Incl. VAT for 2017/18 financial year.
- Drilling of boreholes for Thukela District Municipality in uKhahlamba Local Municipality for the total amount of R1,422, 703.21 Incl. VAT for 2017/18 financial year.



11. SCHEDULE OF PROJECTS

NAME OF PROJECT	CLIENT	CONTACT PERSON	PROJECT DESCRIPTION	APPROXIMATE PROJECT VALUE	SERVICE PROVIDED	PROJECT TIMESCALE	PROJECT STATUS
DRADGING OF OLIPHANTHOSKOP DAM	UTHUKELA DISTRICT MUNICIPALITY	Mr. S Zikalala 073 200 5544	DREDGING OF THE DAM	R33, 119, 304.62	REMOVAL OF SILTY SAND AND RIVER SAND IN THE DAM	12 MONTHS	I IN-PROGRESS
UTHUNGULU ART & CRAFTS CENTRE	IDT	Mr. S Busani 078 148 0427	BUILDING OF UTHUNGULU ARTS & CRAFTS CENTRE	R27, 000,000	PROJECT MANAGEMENT & CIVIL AND STRUCTURAL ENGINEER	12 MONTHS	COMPLETED
ASIDI WATER AND SANITATION PROGRAMME	IDT	Mr. S Busani 078 148 0427	BULK WATER SUPPLY	R75, 000,000	PROJECT MANAGEMENT, CIVIL & STRUCTURAL ENGINEER	12 MONTHS	COMPLETED
BERGVILLE WATER SCHEME	RAND WATER	Mr. Adam Campbell 082 702 7589	DRILLING OF BOREHOLES	R 2,712,060.00	PROJECT MANAGEMENT, CIVIL & STRUCTURAL ENGINEER	6 MONTHS	COMPLETED
UPGRADE OF TRANSNET INTERNAL ROADS	HALIFAX SUPPLIES CC	Mr. O.A Adeleke 012 430 7213	Roads and Storm water	R 1,443,174.97	MAIN CONTRACTOR	6 MONTHS	COMPLETED
JET UNBLOCKING THE SEWER LINES, CATCH PITS AND WATER CHANNELS	AMAJUBA DISTRICT	Mr. Senzo Khumalo 082 705 6358	JET UNBLOCKING	R 2,500.00.00	SUB-CONTRACTOR	36 MONTHS	INPROGRESS
DROUGHT RELIEF PROGRAMME	UTHUKELA DISTRICT MUNICIPALITY	Mr. S Zikalala 073 200 5544	INDAKA AND UKHAHLAMBA LOCAL MUNICIPALITY	R8,842,449.48	EXPLORATION OF UNDERGROUND WATER	6 MONTHS	COMPLETED
DROUGHT RELIEF PROGRAMME	UTHUKELA DISTRICT MUNICIPALITY	Mr. S Zikalala 073 200 5544	DRILLING OF BOREHOLES	R7,410,000.00	EXPLORATION OF UNDERGROUND WATER	6 MONTHS	COMPLETED
UPGRADE OF OLD CAMBRIAN ROAD	DANNHAUSER MUNICIPALITY	Mr. L Geabashe 083 341 9983	ROAD CONSTRUCTION	R20, 000,000.00	CIVIL ENGINEERING AND PROJECT MANAGEMENT	10 MONTHS	COMPLETED
DROUGHT RELIEF PROGRAMME	UTHUKELA DISTRICT MUNICIPALITY	Mr. S Zikalala 073 200 5544	CONSTRUCTION OF EMAZIZINI RISING MAIN INSTALLATION OF 181 T7 OR T5 MONO HAND PUMPS	R10,410, 860.13	CIVIL ENGINEERING AND PROJECT MANAGEMENT	5 MONTHS	COMPLETED
JET UNBLOCKING THE SEWER LINES, CHANNELS AND MAINHOLES	NEWCASTLE MUNICIPALITY	Mr. S Khumalo 082 705 6358	JET UNBLOCKING	R 283,036.00	SUB-CONTRACTOR	36 MONTHS	INPROGRESS



12. DIRECTORS

Mr. Mzwandile Maxwell Gumenke

13. COMPANY REGISTRATION

CK : 2012/069917/07

VAT : 4910267972

TAX : 9607509164

PAY : 7540789916

UIF : U540789916

14. OFFICES

HEAD OFFICE

09 The Corporate Place Building, Floor No. 04, Suite 405

BRANCH

60 BlessBok Road, Observation Hill, Ladysmith

BRANCH

Kenje Building, shop no.6, 96 High Street, Matatiele 4730

BRANCH

130 Alumina Allee, Leopard Park, Office 5, Alton, 5943 New Stand, Lakeside, Vryheid
3100

15. CONTACT DETAILS



16. INPROGRESS IN PICTURES

**DREDGING OF OLIPHANTSKOP DAM 250 000 M3 OF SILT FOR PERIOD OF 6 MONTHS
TOTAL WORK COMPLETED TO DATE IS 200 000 M3, THREE MONTHS LEFT**





(COMPLETED) ASIDI WATER AND SANITATION PROGRAM FOR ASIDI-KILKEEL PRIMARY SCHOOL COMPLETED 2013/14



Water harvesting

New sanitary facilities





DROUGHT RELIEF PROGRAMME FOR UTHUKELA DISTRICT

MUNICIPALITY : FOR INDAKA , UMNAMBITHI AND UKHAHLAMBA LOCAL MUNICIPALITIES REPAIRS



Restoration of the damaged/malfunctioned T7 Hand pump

Repaired T7 Hand pump





**CONSTRUCTION OF UTHUNGULU ART CENTRE FOR THE IDT IN
PROGRESS FROM 2016 (COMPLETED)**

Parking lot under construction





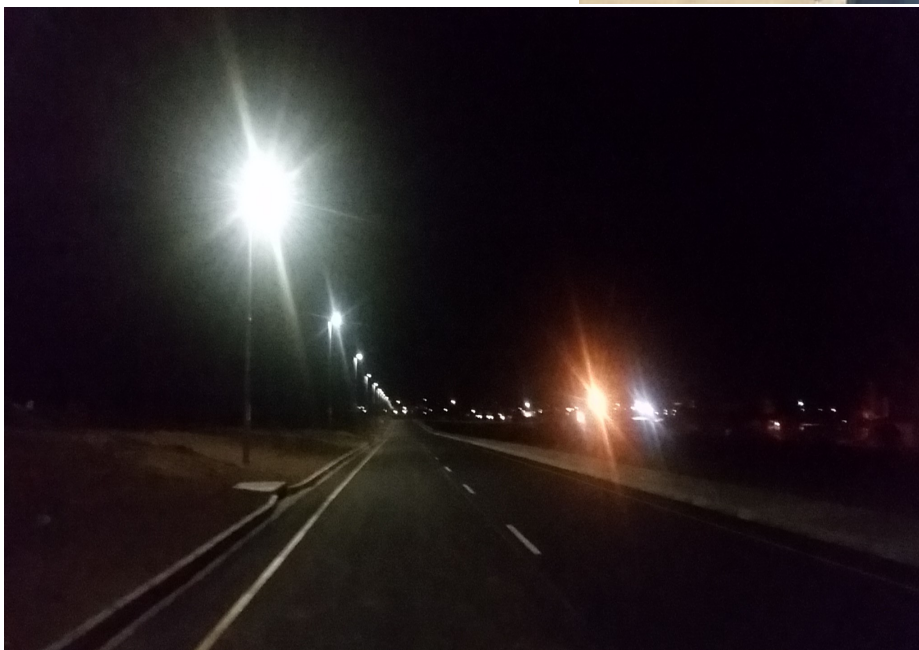
**UPGRADE AND CONSTRUCTION OF OLD CAMBRIAN ROAD IN
DANNHAUSER INDUS-**



Surfaced road 2.5 Kms



Concrete walkway



Street Light at night



**DROUGHT RELIEF PROGRAMME FOR UTHUKELA DISTRICT
MUNICIPALITY : FOR INDAKA , UMNAMBITHI AND UKHAHLAMBA LOCAL
MUNICIPALITIES REPAIRS TO 265 HAND PUMPS IN (6 MONTHS)**



Drilling machine owned by the company

Drilling in progress





**DROUGHT RELIEF PROGRAMME FOR UTHUKELA DISTRICT
MUNICIPALITY : UKHAHLAMBA LOCAL MUNICIPALITIES CONSTRUCTION
OF EMAZIZINI RISING MAIN**



Reservoir on the left and the elevated 5000 litter tank constructed in the Rank



Pump house on the left and the borehole on the right



17. COMMUNITY OUTREACH PROJECT, DONATION OF SCHOOL UNIFORM TO 56 PUPIL IN KHAYELIHLKE HIGH SCHOOL (MBUMBULU AREA) IN 2016



School Leadership

School uniform was handed-over to some school pupil





Some school uniform beneficiaries





COMMUNITY OUTREACH PROJECT, DONATION OF FOOD

An appreciation certificate issued to Mayibuye Consulting and Projects Pty Ltd



Food Parcel donated to the school

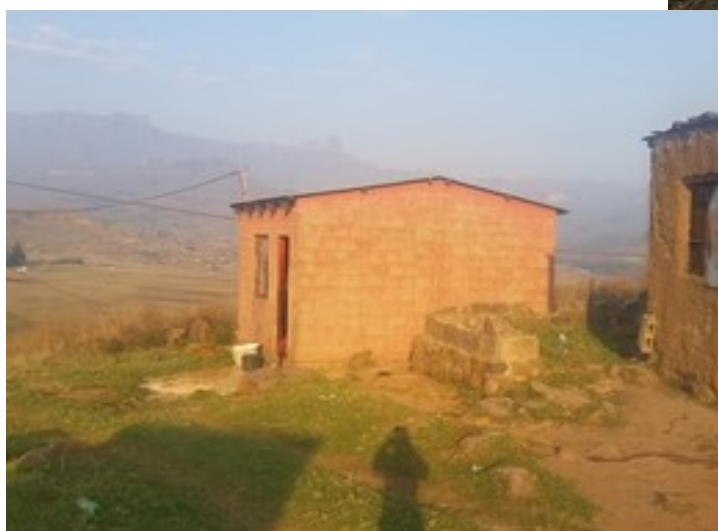




COMMUNITY OUTREACH PROJECT, RENOVATIONS TO THE HOUSE AND CONSTRUCTION OF SANITARY FACILITY AND THE DONATION OF SEATING AND KITCHEN FURNITURE IN 2017



The old and the new sanitary facility which consist of bath area



The house before renovations



Seating and Kitchen furniture items donated to the family

